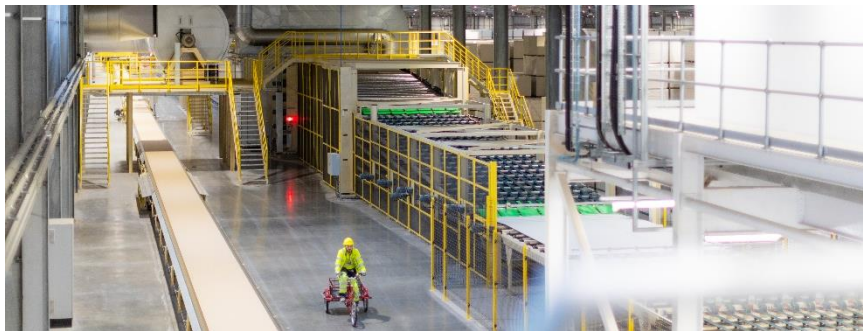


Etex opens 200 million euros plasterboard manufacturing facility in Bristol, UK

- 200 million euros new plasterboard plant in Bristol, Etex's largest production investment ever
- The plant is a state-of-the-art facility, with a strong focus on efficiency and sustainability
- Etex strengthens its UK presence with an innovative and solutions-driven strategy

Etex, a global lightweight construction materials manufacturer, has officially opened its 200 million euros expansion of its plasterboard production facility in Bristol, United Kingdom. It is Etex's largest production investment ever and a commitment to UK manufacturing as the industry grows.

The expansion, which produces plasterboard for the Siniat brand, is the company's most efficient plasterboard production line in Europe when considering its line size, speed and complexity. The capacity installed allows Etex to produce over 98% of its portfolio of boards for the UK and Ireland in the new state-of-the-art facility.



A state-of-the-art and sustainable plant

The plant leverages new technologies to bring efficiency but also sustainability to the forefront of operations. Increasing local production gives Etex greater flexibility and allows for significant carbon savings by decreasing the need to transport boards from other countries.

The new site is a zero waste to landfill plant - and part of Etex's Road to Sustainability 2030 ambitions – which, in the UK, includes rainwater harvesting and increasing its product recycled content year-on-year. Etex is the first manufacturer in the UK to have recycled content certified in new products (through SCS certification), with recycled content in UK products ranging from 23% up to 45% in plasterboards.

Bernard Delvaux, CEO of Etex: *“Etex is a pioneer in the construction sector globally, and in the UK. In Europe, we hold important market positions for our portfolio of products and solutions; plasterboards, fibre cement, insulation, fire protection and modular construction.*

But at the core of our business is our partnerships with customers. Through our complementary portfolio of brands, we are able to take our relationships with customers beyond simply being a supplier and instead work in true collaboration. This is thanks to our solution-first approach, focusing more and more on delivering full solutions and technical expertise to customers, rather than simply supplying individual products.”

John Sinfield, UK and Ireland Country Manager: *“The new Bristol plant expansion is proof of Etex's strong footprint in Europe and its commitment to continually investing in innovation. This investment will give our UK customers*

More information

Joseph Lemaire | Senior Corporate Communications Manager | Tel + 32 15 71 15 71 | joseph.lemaire@etexgroup.com

Etex NV | PassPort Building | Luchthaven Brussel Nationaal | Gebouw 1K | 1930 Zaventem | Belgium

+32 15 71 77 20 | info@etexgroup.com | www.etexgroup.com

additional confidence that we are ready for market recovery and able respond to any increases in demand, in line with wider governmental drives.

As a pioneer in lightweight construction, we strive to deliver better products and construction methods. Through a solutions-first approach within our key brands, we can offer trusted design solutions that are fully tested whenever our customers need them, ultimately making construction time and processes easier, cheaper and more sustainable.”

Etex operates more than 160 sites across 45 countries and employs 13,500 people worldwide.



About Etex

Etex is a global building material manufacturer and pioneer in lightweight construction. Etex wants to inspire people around the world to build living spaces that are ever more safe, sustainable, smart and beautiful.

Founded in 1905, headquartered in Zaventem, Belgium, Etex is a family-owned company with more than 13,500 employees globally. It operates more than 160 sites in 45 countries and recorded a revenue of EUR 3.777 billion and a REBITDA of EUR 695 million in 2024. Etex fosters a collaborative and caring culture, a pioneering spirit and a passion to always do better for its customers.

Etex has seven R&D centres supporting four global divisions:

- Building Performance: leader in plasterboards and fibre cement boards, and the global reference in fire protection solutions for the residential and commercial segments.
- Exteriors: provider of innovative, durable, high performance and beautiful fibre cement exterior materials for architectural, residential and agricultural projects.
- Industry: front runner of engineering expertise to drive the future of high-performance temperature insulation and fire protection in the industrial, aerospace and energy sectors.
- Insulation: leading European insulation provider of glass mineral wool and extruded polystyrene (XPS) to insulate residential and non-residential buildings.

Etex's global portfolio includes leading commercial brands such as Cedral, Durlock, EQUITONE, Eternit, Euronit, Gyplac, Gypsum, Innova, Kalsi, Pladur, Promat, Remagin, Siniat, Skamol, Superboard, Superglass and URSA.

Etex is Inspiring Ways of Living, for more information, please visit our website: www.etexgroup.com

More information

Joseph Lemaire | Senior Corporate Communications Manager | Tel + 32 15 71 15 71 | joseph.lemaire@etexgroup.com

Etex NV | PassPort Building | Luchthaven Brussel Nationaal | Gebouw 1K | 1930 Zaventem | Belgium

+32 15 71 77 20 | info@etexgroup.com | www.etexgroup.com

